

NX Driver

New high-precision, compact NX Driver Created!

Achieve the reduction in size and weight with inherited the performance of KX & NX driver which get a favorable reception to the optimization screw driving.

All fastening conditions can be adjusted to perform the perfect fastening.

The fastening conditions that Torque, Speed and Angle can be input directly with numerical value. In response to the screw and workpiece, the fastening condition will be changed for each fastening point, which can be able to install the programs up to 16 numbers. It also performs high accuracy fastening with two-stage fastening process.

Inherit the high performance to the screw driving

Provide two kind of screw driving method, one Torque monitoring and the other Torque control driving, which it can be met the most suitable method for all kind of workpieces.

Innovate a new AC servo motor

It will be used the most suitable motor for screw driving and make it possible to the high accuracy control. Take care of the trouble by introducing high resolution Encoder with a function to detect error quickly. Reinforced cable connections prevent cable damage.

Equipped with USB and RS485 Ports

It equipped with USB port to communicate with PC. Standard USB cable as commercial item can be used. It is easy to use communication software and improves the performance of maintenance. Additional RS485 port to use communicate with the external device will be created simple network.



Available for waveform judgment (Option)

Torque waveform must be different between normal and fault screw driving. If it makes clear the waveform between, it can be detected screw driving fault. Also when it comes to fault, screw driving will be stopped and helped the damage for workpiece.



NX Driver

Specifications

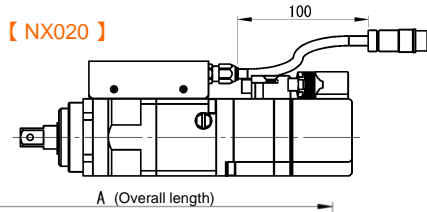
Tool unit model	※1	NX008T2-03S* -20	NX020T2-07■* -20	NX050T2-07■* -20	NX100T2-07■* -20
Setup torque range (N·m)	※2	0.2~0.8	0.5~2.0	1.0~5.0	2.5~9.0
Max. rotation speed (min ⁻¹)	※3	1,200		840	
Output torque accuracy		3σ/x=5% or less		3σ/x =3% or less	
Torque sensor		Planetary gear type reaction torque sensor (strain gauge)			
Tool unit weight (kg)		0.6	1.0	1.1	1.2
Applicable controller model	※4	SD550T03-2020-■			SD550T05-2020-■
Control method		Torque / Angle			
Number of programs		16 sets, max. (from 0 to 15)			
Self diagnostic function		Indication of system error number and external signal output			
Power source	※5	Single phase AC200~230V±10% 50/60Hz			
Max. power requirement (kVA)		0.6	0.45	0.6	0.75
Controller weight (kg)		0.75			

- ※1. 「■」mark into the model number indicates the shape of output shaft as follows. M: M8 Thread, S: Square (9.5mm except NX008 / 6.35mm for NX008) 「*」mark into the version number.
- ※2. If the following conditions will be needed the tightening test with actual Driver. If it is necessary, please feel free to ask.
 • It is required short cycle time. • It is need to keep the high torque value during tightening to the tapping screw.
- ※3. Rotating speed setting is limited by fastening condition.
- ※4. 「■」mark into the model number indicates the optional processing function which analyze the wave form is included or not. (0: Not include, 2: Include)
- ※5. AC100-115V power supply is available with optional AC power unit.

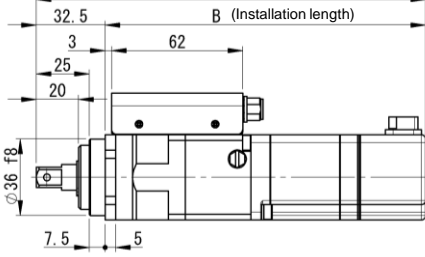
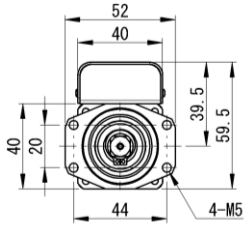
Tool unit outside dimension (mm)

NX020T2, NX050T2, NX100T2

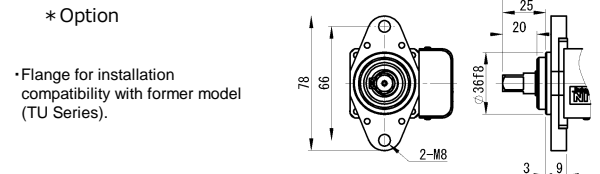
Tool Type	A(mm)	B(mm)
NX020T2-07■* -20	172	139.5
NX050T2-07■* -20	184	151.5
NX100T2-07■* -20	196	163.5



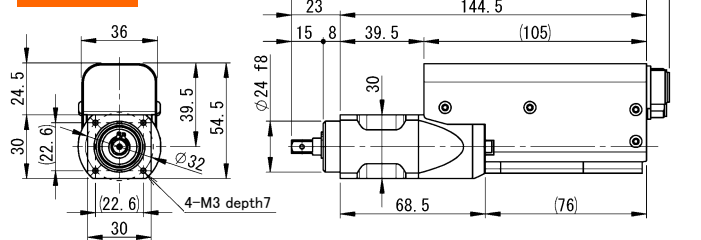
【NX050, NX100】



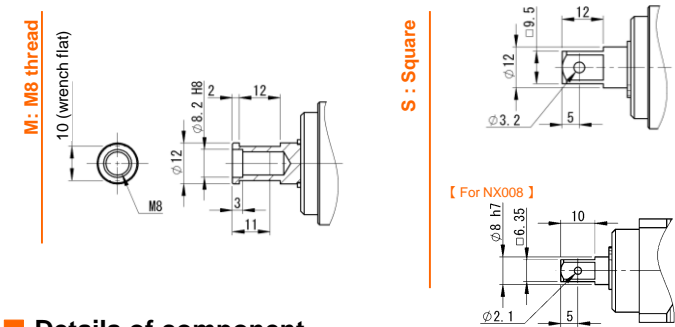
Dimension of TU series compatible flange attachment (mm)



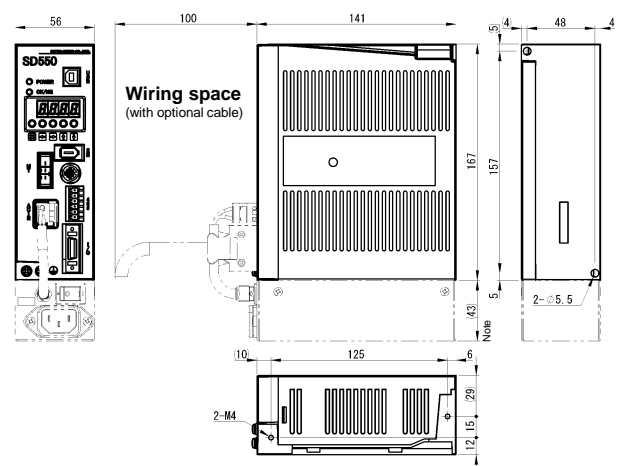
NX008T2



Output shaft end dimension (mm)



Controller outside dimension (mm)

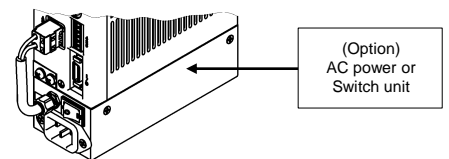


Details of component

- ① Tool Unit : 1pc
- ② Controller : 1pc
- ③ Motor Cable ※1, ※2 : 1pc Max 10m(Optional)
- ④ Encoder Cable ※1, ※2 : 1pc Max 10m(Optional)
- ⑤ Sensor Cable ※1 : 1pc Max 10m(Optional)
- ⑥ Power Connector : 1pc (It doesn't include a cable which is optional)
- ⑦ I/O Connector : 1pc (It doesn't include a cable which is optional)
- ⑧ Network Connector : 1pc

※1 Choose 2m, 5m or 7.5m (Other length is option up to 10m)
 ※2 Model is different between NX008T2 and others.

Note:
 Optional AC power unit or Switch unit will be attached bottom of controller as right side picture.



NITTO SEIKO CO.,LTD.

Machinery Division

Website : <https://www.nittoseiko.co.jp/>

Global sales head office:

2, Shiroyama, Ayabe city, Kyoto 623-0003, Japan
 Telephone / +81-773-42-1290 Fax / +81-773-43-1553

●Specifications and other matters are subject to modifications for performance improvements without notice.
 ●Unique nouns like the product name indicated in this brochure are registered or not registered trademark of each company.