

SD550 series AC servo screw driving motor

KX Driver

New Compact, Light-Weight KX Driver Created!

The same legendary performance of our KX driver in a compact, lightweight package.

Features

1. All screw fastening parameters can be set and perform reliable fastening.

Screw fastening parameters can be set numerically. Torques, speeds, angles, rotation directions and other conditions can be specified individually and directly.

Up to 16 different driving programs can be set and switched between, according to parts/model/fastening condition.

Fastening reliability by using a Two-Stage Fastening process.

2. Higher speed fastening than current model

150W motor and newly designed reduction gear allows higher speed fastening.

3. Same Reliable AC servo motor

Using the same motor as its predecessor, it maintains the high precision that has proven itself in the field for over 10 years.

Also includes a serial encoder, monitoring angle and detecting errors quickly.

Stronger cable connections prevent cable damage.

4. Compact, Light weight Tool and Controller

Tool unit is 33mm shorter and 870g lighter than current motor.

Controller is 43% smaller and 750g less than current controller.

All connections are in front, allowing the controller to be mounted inside an electrical panel.

5. Equipped with USB and RS485 Ports

USB port to communicate with PC.

Standard USB cable can be used.

Communication software allows for easier maintenance and backup.

RS485 port allows for network communication to PLCs, data collection systems, etc.



NITTO SEIKO CO., LTD.

KX Driver

Specifications of tool unit

Tool unit model	※1	KX050T2-01*1-20	KX100T2-01*1-20	KX150T2-01*1-20	KX100T2-03*1-20	KX150T2-03*1-20	KX150T2-07*1-20	KX400T2-07S1-20	KX400T2-14S1-20	
Setup torque range (N·m)	※2	0.08~0.45	0.16~0.91	0.24~1.22	0.5~2.6	0.8~3.8	1.6~8.2	5.0~24	9.0~45	
Recommend torque range (N·m)	※3	0.15~0.30	0.3~0.6	0.6~1.0	1.0~2.0	2.0~3.2	3.2~7.0	7.0~20	20~40	
Max. running speed (rpm)	※4	3000			1360		635	840	420	
Motor capacity (W)		50	100	150	100	150	150	400		
Toll unit weight (kg)		0.45	0.55	0.65	0.66	0.76	0.87	2.1	2.9	
Number of programs		16 sets, max.								
Self diagnostic function		Indication of system error number and external signal output								
Applicable controller model		SD550N05-2020						SD550N10-2020		
Controller weight (g)		750						950		
Power source		Single phase AC200~230V±10% 50/60Hz								
Max. power requirement (VA)		350	500	650	500	650	650	1200		

※1. mark in model number indicates differences shape of output shaft. M: M8 thread, H: Hex (6.35mm), S: Square (9.5mm)

※2. If your application has a short duty cycle, or a long tapping cycle with high torque, we will have to test to determine the proper motor.

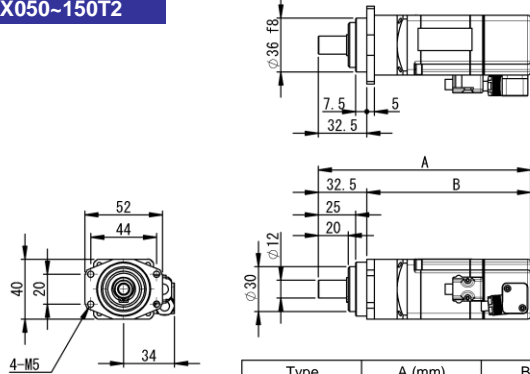
※3. Recommended torque means the torque range that screw fastening can be performed with the best performance.

Even if it is out of recommended torque, screw fastening itself will be done if torque setting is in the torque setting range.

※4. Rotating speed setting is limited by fastening condition.

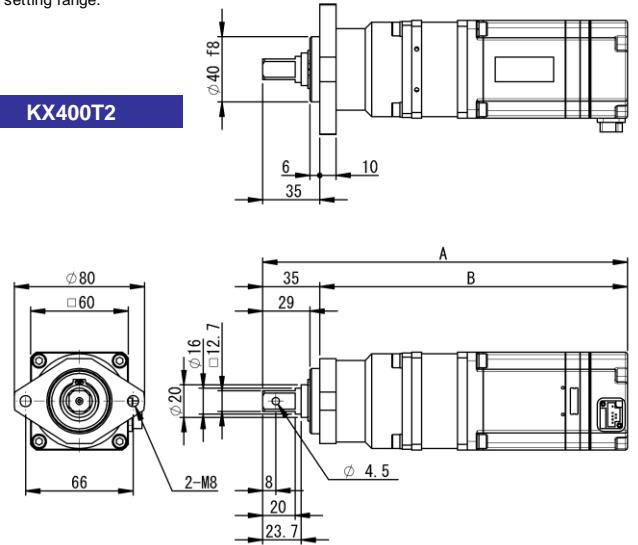
Tool unit outside dimension drawing (mm)

KX050~150T2



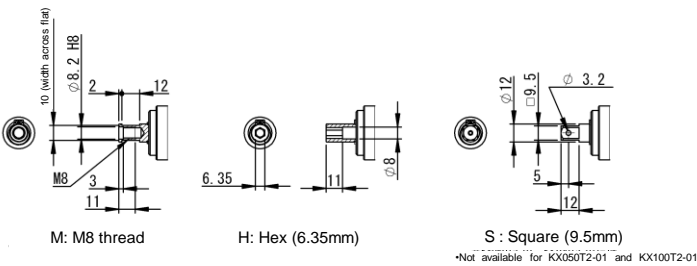
Type	A (mm)	B (mm)
KX050T2-01*1-20	130	97.5
KX100T2-01*1-20	142	109.5
KX150T2-01*1-20	154	121.5
KX100T2-03*1-20	142	109.5
KX150T2-03*1-20	154	121.5
KX150T2-07*1-20	185	152.5

KX400T2



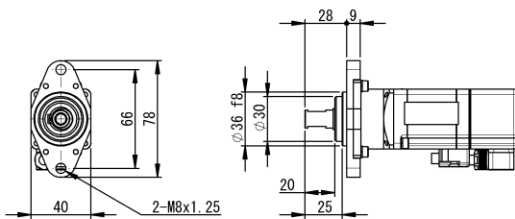
Type	A (mm)	B (mm)
KX400T2-07S1-20	224.1	189.1
KX400T2-14S1-20	251.2	216.2

Output shaft end dimensions (mm)

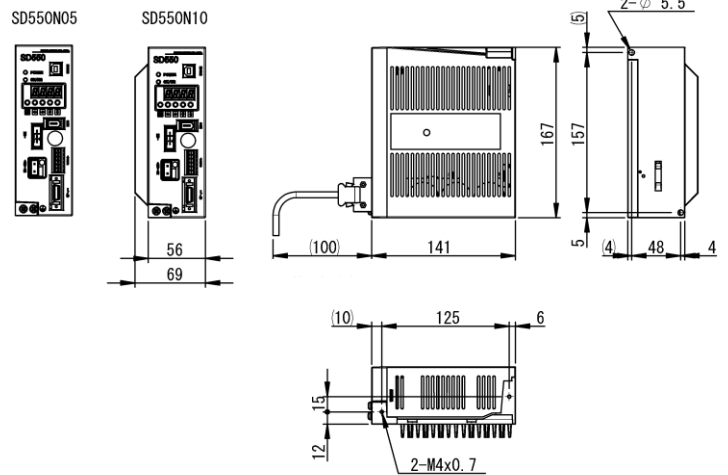


Option (mm)

OP:BU(Attached. Compatible flange for current model)



Controller outside dimension drawing (mm) Wiring space (with optional cable)



NITTO SEIKO CO.,LTD.

Machinery Division

Website : <http://www.nittoseiko.co.jp/>

Global Sales head office:

shiroyama-chou 2, Ayabe, Kyoto 623-0003, Japan
Phone : 81-773-42-1290 Fax : 81-773-43-1553
E-mail : san-seisankanri@nittoseiko.com

North America Branch office:

44425 Phoenix Drive Sterling Heights, MI 48314 USA
Phone : 1-248-588-0133 Fax : 1-248-588-0573