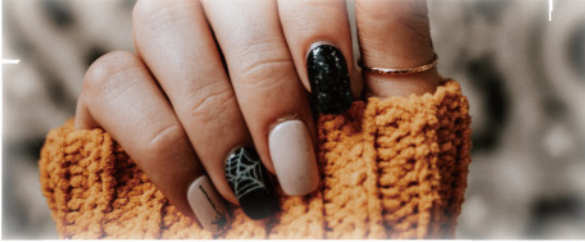


Richpen Airbrush





Airbrushes are hand sprayers which apply paints and other coatings in mist form using compressed air. They make possible detailed artistic expressions such as lines, shading, and gradation. Airbrushes are used across a wide range of applications, such as custom paint jobs, hobbies, and art.

Richpen Airbrush

Standard airbrush handpieces

Fits the hand perfectly - just like holding a pencil - making delicate operations possible.

- Double-action type (013G only is a single-action type)
- The Spectra includes a detachable large-capacity glass bottle

APOLLO

112 A

- Nozzle size $\phi 0.2$ mm
- Cup 0.5 mL



112 B

- Nozzle size $\phi 0.2$ mm
- Cup 1.5 mL



113 C

- Nozzle size $\phi 0.3$ mm
- Cup 7 mL



Includes a hose barb fitting HF-05 (see p.4)

SPECTRA



013 G

- Nozzle size $\phi 0.3$ mm
- Cup 35 mL

Single-action finger lever enables beginners to operate it with ease.



033 G

- Nozzle size $\phi 0.3$ mm
- Cup 35 mL

Double-action finger lever allows for fine control of spray pattern.



Includes a hose barb fitting HF-05 (see p.4)

Spare bottle



GC-35

GN-35

Model	GC-35	GN-35
Capacity	35 mL	35 mL
Compatible model	013G, 033G	

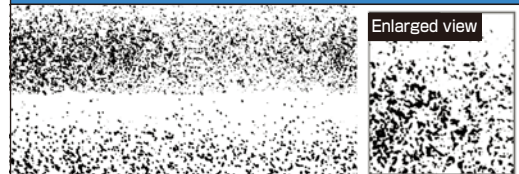
{ Wide Range of Richpen Applications }

Custom painting	Hobby	Paintings	Stage design	Beauty
<ul style="list-style-type: none"> - Motorcycle and automobile bodies - Helmets - Surfboards 	<ul style="list-style-type: none"> - Figures - Model kits - Miniatures - DIY 	<ul style="list-style-type: none"> - Landscapes - Animals - Portraits 	<ul style="list-style-type: none"> - Stage scenery - Stage props - Prosthetic makeup 	<ul style="list-style-type: none"> - Nail art - Body painting - Stain removal during cleaning

{ How to select nozzle size }

$\phi 0.2, \phi 0.3, \phi 0.35$ mm	$\phi 0.4, \phi 0.6, \phi 1.1$ mm
<p>Accepts inks, watercolors, gouaches, oil colors, thinly reduced acrylics, etc. For fine-detail work.</p>	<p>Accepts lacquers, oil paints and other viscous liquids. For spraying broader areas.</p>

Sandy pattern



All Richpen airbrushes can spray sandy patterns with the needle/nozzle caps removed.

GUNPIECE

Small Touch-up Gun. Double-action trigger control.

Used for detailed work such as commercial art, model making, custom designing, automotive touch-up work, T-shirt painting and hobbies.



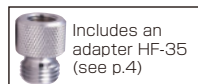
GP-1

- Nozzle size ϕ 0.35 mm
- Cup 8 mL/15 mL
- (Two cups included)



GP-S1

- Nozzle size ϕ 0.2 mm
- Cup 8 mL/15 mL
- (Two cups included)



Includes an adapter HF-35 (see p.4)

ES-6

- Nozzle size ϕ 0.6 mm
- Cup 50 mL



GP-2

- Nozzle size ϕ 0.4 mm
- Cup 8 mL/15 mL
- (Two cups included)

*Connection: G1/8"

	PC-8	PC-15	PC-50
Model	PC-8	PC-15	PC-50
Capacity	8 mL	15 mL	50 mL
Compatible models	GP-1/GP-2/GP-S1		

	SC-50	EC-150
Model	SC-50	EC-150
Capacity	50 mL	150 mL
Compatible models	ES-6	

RICH 8 series

Large pistol grip with 0.6 mm and 1.1 mm diameter nozzles

Suited for murals, general painting, and stain removal.

Offers three types of spray patterns: Flat fan, small round, and round patterns. Double-action type/side-cup specification

For spraying lacquers.

For spraying watercolors and oil colors. For spraying lacquers.



RS-506N

- Flat fan and round
- Nozzle size ϕ 1.1 mm
- Cup 150 mL

*Connection : G1/4"



RS-507N

- Small round
- Nozzle size ϕ 0.6 mm
- Cup 150 mL



RS-508N

- Round
- Nozzle size ϕ 0.6 mm
- Cup 150 mL

Spare cup



SC-150

Model	SC-150
Capacity	150 mL
Compatible models	RS-506N RS-507N RS-508N

Accessories



Air Filter

AF-20-01B

- Filters air and removes moisture, with clear shatterproof plastic filter bowl.
- Air connections: G1/4" male

Air Hose

Polyurethane tube with high pressure resistance. 6 mm outer diameter, 1 mm thick. Soft, easy to handle.

S G1/8" See the figure below for connection signs (S, L). L G1/4"

Model	SL-02-S	SL-03-S	SL-05-S
Length	2 m	3 m	5 m
Connection	S-L		

L G1/4" See the figure below for connection signs (S, L). L G1/4"

Model	LL-02-S	LL-03-S	LL-05-S
Length	2 m	3 m	5 m
Connection	L-L		

S (with HF-20) G1/8" See the figure below for G1/8" connection signs (S, L). L G1/4"

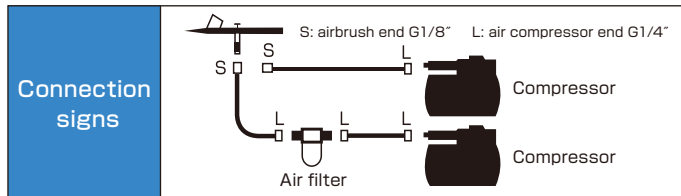
Model	QL-02-S	QL-03-S	QL-05-S
Length	2 m	3 m	5 m
Connection	S-L		



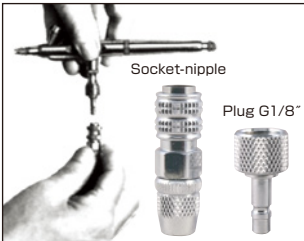
Air Filter Regulator

AW-20-01BG-B

- Regulates air pressure, filters the air and removes moisture.
- Air connections: G1/4" male



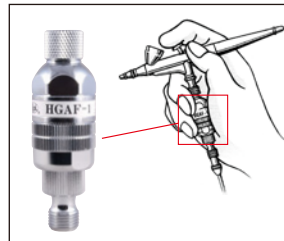
Quick-Disconnect Coupling



HF-20

- Designed for users who need the ability to quickly change an air hose to multiple airbrushes.
- To detach the hose, move up the socket-nipple by holding the upper part.
- Air will not bleed when the hose is removed.

Airbrush Direct Filter



HGAF-1

- Effectively eliminates moisture from compressed air.
- Useful for work in the rainy season.

Hose Barb Fitting

HF-05



G1/8" × φ4 mm hose (ID)

HF-10



G1/4" × φ4 mm hose (ID)

Adapter

HF-30



G1/4" female × G1/8" male

HF-35



G1/8" female × G1/4" male

Nipple

HF-40



G1/4" male × G1/4" male